

# 800 COMMERCE GREENWOOD, IN

800 COMMERCE PARKWAY  
WEST DRIVE

TOTAL BUILDING FOOTPRINT:	795,237 SF
AVAILABLE SUITE C:	141,000 SF
OFFICE:	1,700 SF
WAREHOUSE:	139,300 SF
DRIVE-IN DOORS:	1
DOCK DOORS:	16

TOTAL AUTO PARKING SPACES:	358
TOTAL TRAILER PARKING SPACES:	151

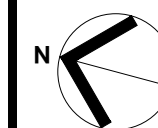
36' CLEAR HEIGHT  
FULLY SPRINKLERED

**LEGEND:**

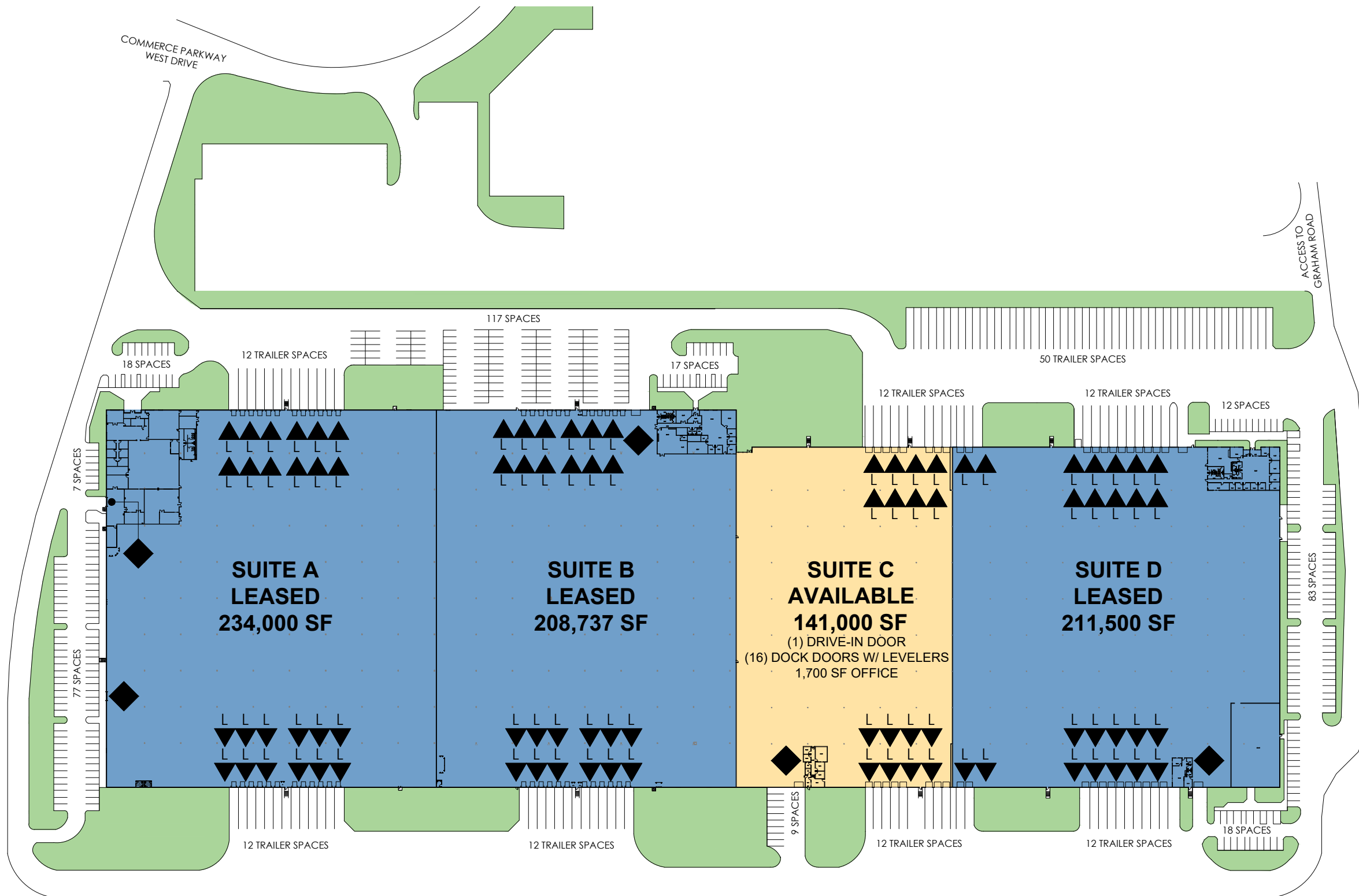
- ▲ DOCK DOOR
- ▲ DOCK POSITION W/ LEVELER
- ◆ DRIVE-IN DOOR
- LAND
- AVAILABLE AREA
- LEASED AREA



8888 KEYSTONE CROSSING, SUITE 570  
INDIANAPOLIS, IN 46240  
PHONE: (317) 228.6200



DATE: 07.06.2021



INTERSTATE 65

NOTE: THIS CONCEPTUAL PLAN IS FOR MARKETING PURPOSES ONLY AND HAS BEEN PREPARED BASED ON PRELIMINARY AVAILABLE SITE INFORMATION DEEMED RELIABLE. ALL DIMENSION AREA CALCULATIONS ARE SUBJECT TO VERIFICATION BY A PROFESSIONAL ENGINEER FOR COMPLIANCE WITH ALL FEDERAL, STATE AND LOCAL REGULATIONS.